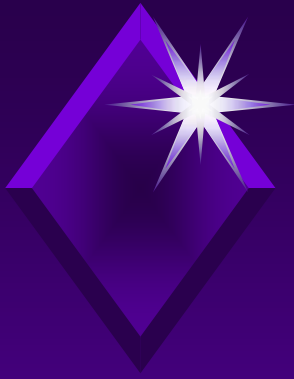


# *HOW TO PLAN AND IMPLEMENT CALLA INSTRUCTION*

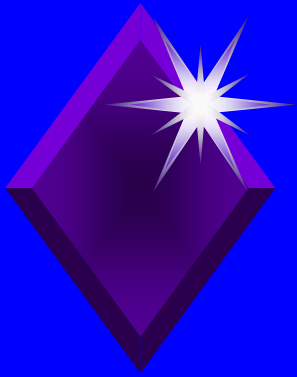


*Anna Uhl Chamot  
The George Washington  
University*



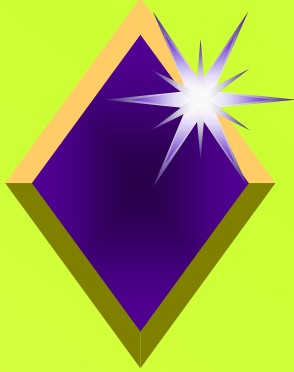
# *PURPOSE OF CALLA*

- ◆ Focus on learner.
- ◆ Improve academic language proficiency.
- ◆ Motivate with content topics.
- ◆ Teach learning strategies.



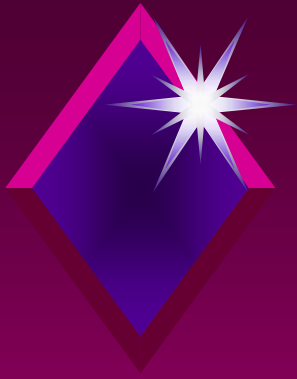
# *THE COGNITIVE ACADEMIC LANGUAGE LEARNING APPROACH (CALLA)*

- ◆ Cognitive-Social Learning Model
- ◆ Authentic Content
- ◆ Academic Language
- ◆ Learning Strategies



# ***COGNITIVE-SOCIAL LEARNING MODEL***

- ◆ The learning process is mentally active and strategic.
- ◆ Learning involves higher level thinking, not just memory.
- ◆ Social context and interaction are critical.
- ◆ Students learn content by relating it to their prior knowledge.
- ◆ Students learn processes through integrative practice individually and with peers.
- ◆ Learning strategies can be taught and learned.



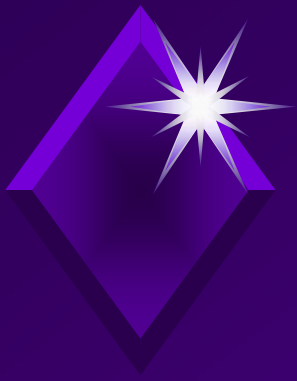
# *AUTHENTIC CONTENT*

- ◆ Aligned to curriculum standards.
- ◆ Interesting school and cultural topics.
- ◆ Linked to students' prior experiential and cultural knowledge.
- ◆ Taught through hands-on/inquiry-based/cooperative learning tasks.



# *ACADEMIC LANGUAGE*

- ◆ Language development through content across all curriculum areas.
- ◆ Vocabulary and discourse of content subjects and cultural topics.
- ◆ Linked to students' prior linguistic knowledge.
- ◆ Development of language awareness.

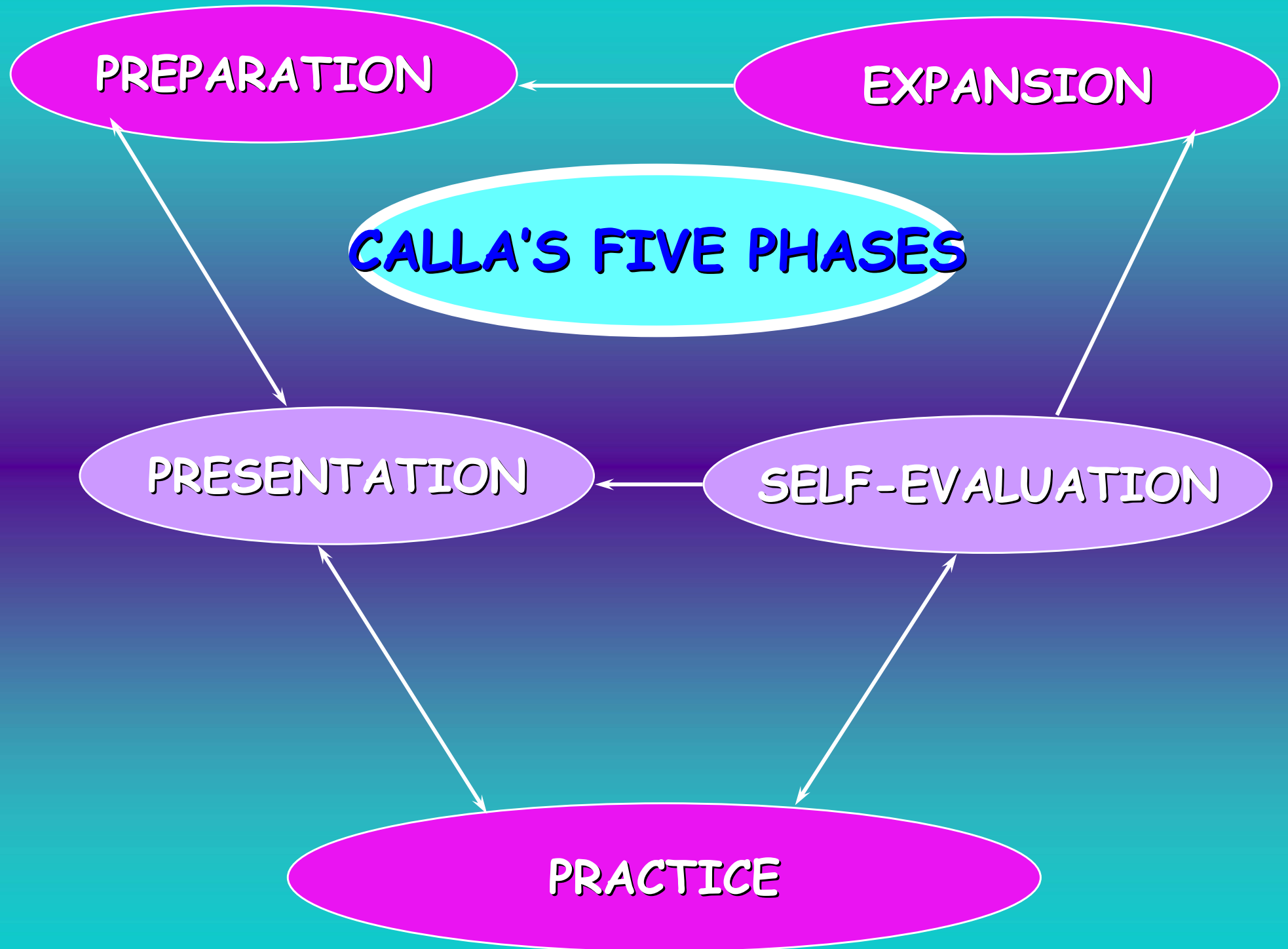


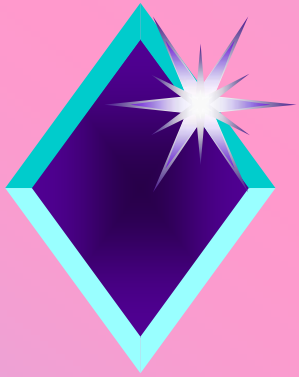
# *LEARNING STRATEGIES*

- ◆ Identify students' current learning strategies.
- ◆ Provide explicit explanation, and naming of strategies.
- ◆ Model and name strategies.
- ◆ Have students evaluate strategies.
- ◆ Develop metacognitive awareness and self-regulated learning.

*CALLA*  
*INSTRUCTIONAL*  
*SEQUENCE*

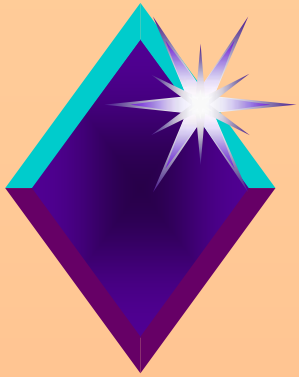
Five Recursive Phases





# *PREPARATION*

- ◆ **Identify objectives.**
- ◆ **Elicit students' prior knowledge.**
- ◆ **Develop vocabulary.**
- ◆ **Provide motivation.**



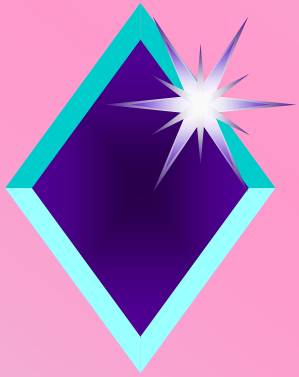
# ***PRESENTATION***

- ◆ **Present new information in varied ways.**
- ◆ **Model processes explicitly.**
- ◆ **Explain learning strategies.**
- ◆ **Discuss connections to students' prior knowledge.**



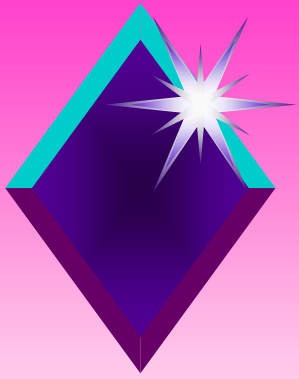
# *PRACTICE*

- ◆ Use hands-on/inquiry-based activities.
- ◆ Provide different cooperative learning structures.
- ◆ Use authentic content tasks.
- ◆ Ask students to use learning strategies.



# ***SELF-EVALUATION***

- ◆ Students reflect on their own learning.
- ◆ Students evaluate themselves.
- ◆ Students assess their own strategy use.



# ***EXPANSION***

- ◆ Students apply information to own lives.
- ◆ Students make connections between language and content.
- ◆ Students relate information to first language knowledge.
- ◆ Parents contribute to learning.



# *CALLA Instruction Is...*

- ◆ Learner-centered
- ◆ Reflective
- ◆ Supportive
- ◆ Focused
- ◆ Enthusiastic